

/œÊ ÞÊ i•œÛÊ œ““Ö~`ìÞÊ i“LiÀÃJÊ
/>Ý«>ÞiÀÃÊ>~`Ê* >Ài~iÀ\

vliÀÊV>ÀivÖ•Ê«•>~`~`}Ê>~`Ê
`i•^LiÀ>ì^œ~jÊì...iÊ >ÃiÊ Ã•^«Ê œ>À`ÊœvÊ
`ÖV>ì^œ~Ê...>ÃÊV...œÃi~ÊìœÊÀi“>~`ÊÖ~`iÀÊ
ì...iÊì>ÝÊV>~`Êv.ÊÀÊiÀ:ÊiÊiÊ^ÃÊ>Ê
“^ÃÃ^œ~ÊœvÊì...iÊ œ>À`ÊìœÊVÀi>ìiÊ>ÊÃiÀœ~}Ê
vœÖ~`>ì^œ~ÊvœÀÊì...iÊvÖìÖÀiÊÜ...^iÊÀi“>~`~`}Ê
v^ÃV>••ÞÊÀiÃ«œ~Ã^L•i°Ê
“~Ê/ÖiÀ`>ÞJÊ >ÞÊ£ÇJÊÀiÃ^i~iÀÊÜ^••Ê
LiÊ>ÃŽi`ÊìœÊÜœìiÊœ~Êì...iÊ«Àœ«œÃi`ÊÓä£Ê‡
Óä£ÇÊLÖ` }iìÊœvÊf££ÓJÊnî]£{ÇJÊÜ...^V...Ê
Ài«ÀiÃi~iÀÊ>~`Ê~VÀi>ÃiÊœvÊ£°{xÊ«iÀVi~iÊ
vÀœ“Êì...iÊVÖÀÀi~iÊÞi>ÀÊ>~`ÊV>ÀÀ`iÀÊ>Ê
ì>ÝÊ•iÛÞÊ~VÀi>ÃiÊœvÊâiÀœÊ«iÀVi~i°Ê/...iÊ
«Àœ«œÃi`ÊLÖ` }iìÊÜ^••ÊÀ«iV^v^V>••ÞÊÃÖ««œÀiÊ
ì...iÊ...^}...ÊÃV...œœ•½ÃÊ~iÜÊ *Ê >«Ãiœ~iÊ
«Àœ}À>“]Êì...iÊÀiÃiœÀ>ì^œ~ÊœvÊÃÖ““iÀÊ
ÃV...œœ•]Ê ‡£ÓÊ“ÖÃ^VÊ>~`Ê>Ài]Ê>~`Ê -Ê
>~`Ê -Ê>ì...•iì^V]Ê>“œ~}Êœì...iÀÊiÃi~i^>•Ê
«Àœ}À>“ÃÊ>~`ÊÃiÀÜ^ViÀ°Ê
/...iÊ^ÃiÀ^ViÊÀi>•^âi`ÊÃ>Ü^~}ÃÊì...ÀœÖ}...Ê
ìi>V...iÀÊÀi^Ài“i~iÀÊ>~`Êì...iÊÀi>••œV>ì^œ~Ê
œvÊìi>V...iÀÊÀiÃœÖÀViÀÊ`ÖiÊìœÊ`iV•^~`~`}Ê
i~Àœ••“i~i°Ê ~Ê>~`ì^œ~jÊÜiÊ>ÀiÊÀi>•^â~`}Ê
>~`ÊœÛiÀ>••ÊÀi`ÖVi^œ~Ê~ÊVœ~iÀ`LÖì^œ~ÃÊìœÊ
ì...iÊ/i>V...iÀÃ½Ê,ì^Ài“i~iÊ-ÞÀi“Ê>~`Ê
“«œÞiiÃ½Ê,ì^Ài“i~iÊ-ÞÀi“Ê`ÖiÊìœÊ>Ê
•œÜiÀÊVœ~iÀ`LÖì^œ~ÊÀ>ìiÊ~iÝiÊÞi>À°Ê/...iÊ
`^ÃiÀ^ViÊÜ^••ÊVœ~i~ÖiÊìœÊÖÃiÊvÖ~`ÃÊvÀœ“Ê
ÀiÃiÀÜiÀÊœvÊfÓ]Çxî]ÊnÓÊìœÊv^••Êì...iÊLÖ` }iìÊ
`iv^V^i°Ê/...iÊ^ÃiÀ^ViÊÜ^••Ê>•ÃœÊÀiVi^ÜiÊ
>~`Ê~VÀi>ÃiÊ~ÊÃi>ìiÊ>^ÊœvÊfÓ]££î]n£ä]Ê
i~Àœ••“i~Ü^••]ÊnÓÊìœÊ i°Ê

i~i•€ýÃiÀ%É0•€À ÀiV^δ >•ÃÀçÀ«•~À%ÊG%ì %ci•PÀç>iÊVœ~i^švÀœ“Ê

2016-2017 Proposed Budget

Y « i ~ ` ^ Ì Ò À i Ñ

Description	2015-2016 Final Budget	2016-2017 Adopted Budget	Difference from 2015-2016
Board of Education Includes operational expenses, district clerk, district meetings, etc.	\$63,334	\$69,657	\$6,323
Central Administration Includes operational expenses and salaries for all staff in the office of the superintendent.	\$298,624	\$335,385	\$36,761
Finance Includes expenses for accounting, treasurer, purchasing and fiscal advisers.	\$907,399	\$872,467	(\$34,932)
Staff Includes expenses for legal costs, personnel, public information and administration.	\$700,866	\$707,754	\$6,888
Central Services (Operations and Maintenance) Includes expenses and salaries related to the operation and maintenance of district buildings. Also, the district entered into a three-year lease for a tractor during 2014/15. The total amount of the lease is \$37,362. Twelve monthly lease payments, totaling \$12,454, are included in the 2016/17 budget. Includes the estimated expense associated with the purchase of the following three pieces of equipment for the Buildings and Grounds Department: Truck \$35,000, Skid Steer \$56,975 and Utility Truck \$64,740.	\$7,078,892	\$7,327,172	\$248,280
Special Items Includes costs for insurance, dues and BOCES.	\$1,145,233	\$1,166,699	\$21,466
<hr/>			
Total GENERAL SUPPORT	\$10,194,348	\$10,479,134	\$284,786
Administration and Improvement: Building	\$5,139,636	\$5,232,798	\$93,162
Teaching Expenses: Regular School	\$38,229,638	\$39,043,289	\$813,651
Special Education	\$12,972,656	\$13,313,449	\$340,793
Special School Services	\$0	\$0	\$0
Computer and Media Services	\$306,032	\$383,644	\$77,612
Pupil Personnel	\$3,854,259	\$3,878,807	\$24,548
<hr/>			
Total INSTRUCTION Includes estimated expenses associated with the four-year lease of photocopiers through Eastern Suffolk BOCES. The total amount of the lease over the four years is \$422,611, of which \$105,653 is budgeted in 2016/17.	\$60,502,221	\$61,851,987	\$1,349,766
Total TRANSPORTATION Includes two-year extension at 0% for 2016/17 and the lower of 2% or CPI for 2017/18.	\$5,496,301	\$5,827,471	\$331,170
Total COMMUNITY SERVICES (RECREATION)	\$234,905	\$239,395	\$4,490
Fringe Benefits	\$28,275,123	\$27,638,084	(\$637,039)
Debt Service (TANS)	\$451,641	\$743,910	\$292,269
Interfund Transfers (Spec. Aid, Debt Svc, H/C, Capital) Includes the expenses of \$58,000 associated with network upgrades and wireless access.	\$5,921,919	\$5,903,166	(\$18,753)
Total UNDISTRIBUTED	\$34,648,683	\$34,285,160	(\$363,523)
<hr/>			
TOTAL BUDGET	\$111,076,458	\$112,683,147	\$1,606,689
Percent Increase			1.45%

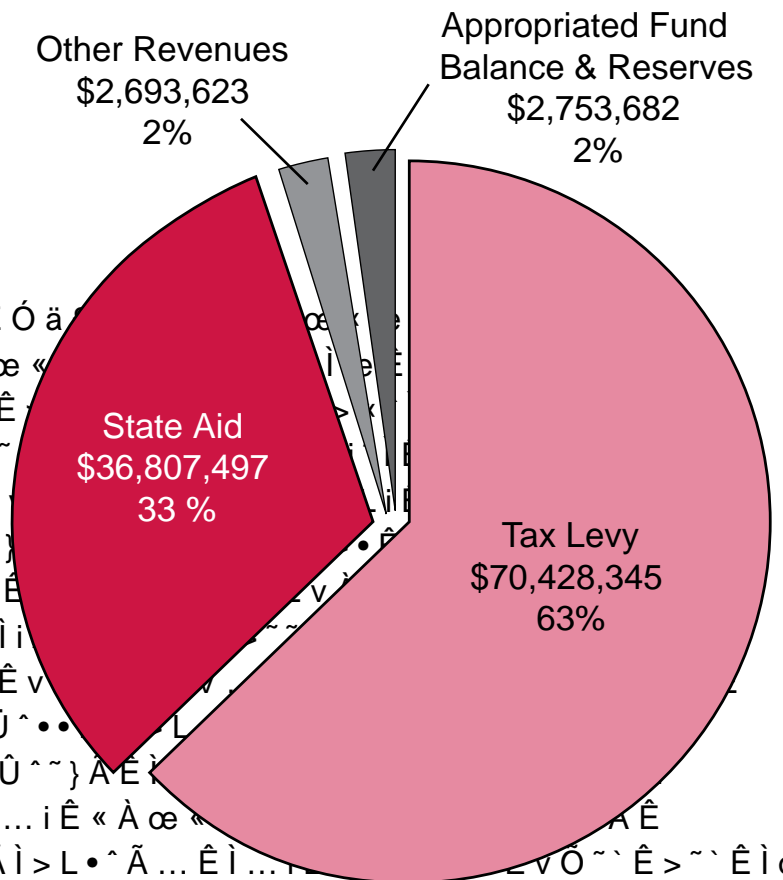


2016-2017 Proposed Budget

Description	2015-2016 Final Budget	2016-2017 Adopted Budget	Difference from 2015-2016
State Aid	\$34,354,120	\$36,807,497	\$2,453,377
Other Revenues	\$2,293,993	\$2,693,623	\$399,630
Appropriated Fund Balance	\$1,300,200	\$354,819	(\$945,381)
Appropriated Benefits Accrued Liability	\$75,000	\$75,000	\$0
Appropriated Retirement Contrib. Reserve	\$1,815,000	\$1,564,058	(\$250,942)
Appropriated Unemployment Reserves	\$159,705	\$159,705	\$0
Appropriated Workers' Comp. Reserve	\$650,095	\$600,100	(\$49,995)
Transfer from Debt Service Fund	\$0	\$0	\$0
Tax Levy	\$70,428,345	\$70,428,345	\$0
TOTAL REVENUES/RESERVES	\$111,076,458	\$112,683,147	\$1,606,689
Tax Rate per \$100 Assessed Value	\$19.956	\$19.956	
Tax Levy Increase	0.96%	0%	
Tax Rate Increase	0.96%	0%	
Total Assessed Value	\$352,919,815	\$352,919,815	\$0
Homestead Assessed Value	\$313,330,621	\$313,330,621	\$0
Non-Homestead Assessed Value	\$39,589,194	\$39,589,194	\$0

PROPOSITION NO. 1 School District Budget Vote

PROPOSITION NO. 2 Establishment of a Capital Reserve Fund



Points of

UË ÖÀÊ œ ÖiÄi>~^}Ê Ê“ÖÄ^V^>~ÄÊ>~ÊÓ{Ê“^^`•iÊÄV...œœ•Ê
“ÖÄ^V^>~ÄÊÜiÄiÊÄi•iVli`ÊvœÀÊì...iÊ- Ê••‡ œÖ~ìPÊ iÄi^Ü>•°ÊÊ

UË .iÊ...^}...ÊÄV...œœ•½ÄÊÜ>ÄÄ^ìPÊ,i`“i~ÊvœœìL>••ÊÄµÖ>`ÊÜœ~Êì...iÊ
`^Ü^Ä^œ~>•Ê«•>PœvvÊ>~`ÊVœ“«iìi`Ê^Êì...iÊ-Övvœ•ŽÊ œÖ~ìPÊ
^Ü^Ä^œ~Ê ÊVœÖ~ìPÊV...>“^œ~Ä...^«Ê}>“iÊ>ìÊ-ìœ~PÊ ÄœœŽÆÊì...iÊ
ìi>“½ÄÊVœ>V...Êi>Ä~i`ÊÜ.~ÄÊ“^iÄiœ~iÊ£ä ä

UË ...^}...ÊÄV...œœ•ÊL>ÄŽiìL>••ÊÄì>ÄÊÄVœÄi`Ê...iÄÊ£]äääì...ÊV>ÄiiÄÊ«œ~ìÊ
>ÄÊ>ÊÜ>ÄÄ^ìPÊ>ì...•iìijÊœ~•PÊì...iÊvœÖÄì...Ê >ÄìÊ Ä•^«Ê}^Ä•ÄÊL>ÄŽiìL>••
iÊœœ~POP>~Ê ÊÜiÄiÊÊ
Đ~`Ê“i`iV`iÊÊV`ÊœœÄÊĐBÄP>ÊÄÊPÀð ð«ÊÀÀ Ü^œ~PĐÊ

UË .iÊ...^}...ÊÄV...œœ•½ÄÊìi>“½ÄÊÜĐ€Çj°ÅgĐP PÜÄ^œ~Ê^V«iµ`“~iÊ
PÊÜ%Ä`Ê%Đ0€ >ìÊ/...iÊ>“«iÄiÊ
%iœV}...^~Äi^œ`Ê^Ê%Ü>~Êœ °.ÄÄ^ì“½ÄÊœ^œĐà >ì•i_Ê
ì...iÊ«%^^Ü•i“œi~`ÊÜi^^^œÊœiìÊijÊ>~iÊ

UËi ~ÄÊ>~iÊÄÜ`“ììPÊ>ÊÜ%Ä`Ê“«PÄîðP•à Đ0€ >ìÊ/...oÊi Äli ìÊ^^ÜÄìPÀ€À€àð Ü

UË^>Ê«•ì °Ä`Ê>iÄi`“~`Ê/...iÊ>^œ~>%ÊmÊ^pi]Ê^Êì...iÊÄ`Ê

UË .iÊìi>nÊì...iÊ
P7ĐÀ0€0Ä%ì^œPÊV...>“^œ~%...“iÊ^Êì...iÊÜjì“ìPÊì...iÊ“v« ÄiÊ

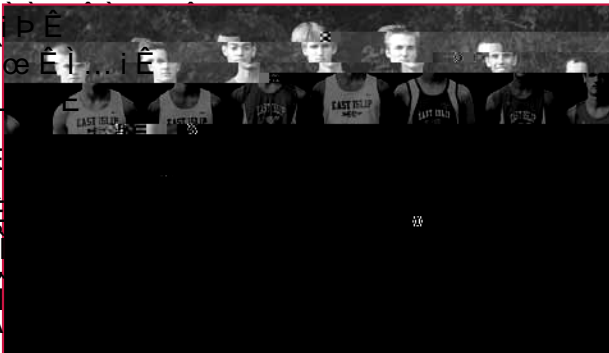
UË .iÊ...^}...ÊÄV...œœ•½ÄÊ^PÀ0À€%ì^œ~>•Ê}...Ê>^L^L> ìœÜÊÄÜ`“ììPÊÄœ`“^PĐ

UË

A Message from the Superintendent

Points of

/æ}il...iÄÊÜiÉ...>ÛiÉ">`iÉÄæ"iÉ`^vv^VÖ•iÉ
`iv^Ä^æ~ÄÊi...>iÉ>•æÜÊi...iÉ`^ÄiÄ^viÉiæÉÄiÄi~}i...i~É
^iÄÊv^>~v^>•ÉvæÖ~>i^æ~ÉiæÉi~ÄÖÄiÉi...>iÉ >ÄiÉ
Ä•^«É">~i>^~ÄÊi...iÉ...^}...±µÖÊ•iÉpÄÉv.VæÄiÄÄÜÖiÉÉ
i...>iÉ«ÄæÜ`iÄÊvæÄÉæÖÄÉÄiÖÜÄ`iÄ«ÉÄÖÉi}iÉÉÄi»v.VÉÉ
ÄiÖVi`æ~ÄÊL>ÄiÉæ~Éiv•^^~}Öi•ÄæÜ>ÄiÄÊÉLi>i~}Éæ
>ÄÊÜi•É>ÄÊi...iÉvÖ•ÉÄiÄiæÄ>i...ææÖæVÉi>~iÉi>«ÉÄi>
•^^~>i^æ~É`ÖÄi`i~i}Éi...iÉ`^ÄÜÄ`ÄiÉÄæÄiÉÜÄiæ~}jÉ•
UÊ~`i>~É`iÄÊ>v>`i^`VÉ>~Évæ±VÖiÄÄ}VÖ•>ÄÉ
ævviÄ~}ÄÊvæÄÉÄiÖ`i~iÄ°
UÊ`É`*É>«Äiæ~iÉ«Äæ}Ä>°ÉUÊiÉ...^}...ÉÄV...ææ•ÉÄi~`
UÊ`ÖViÉæÖÄÉÄi•>~ViÉæ~ÉÄiÄÄÜÄiÉÉvÖ~iÉÄpÉÉ...iÉ
LÖ`}iÉÉvÄæ`Éf{É`^••æ~ÉiæÉfÖ`ÇÉ`V...æ>ÄÄ...«É`Äæ
Ü...^V...ÉÜ••É•i>`ÉiæÉ`«ÄæÜiÉy^ÄV>É`i>•i°ÄiÉ
UÊ«>pÉi...iÉvÖ•É>•æi`i~iÉævÉiÖÖævÉÖæÉÉÜÄiÉ~
i...iÉÄi>liÉvæÄÉi...iÉ«ÄiÜ`æÖÄÉÜiÄæ>ÉLpÉÉ...Éæ•}jÉæ>A`jÉ>AÉU••
LÖ`•^^}É>~°
UÊ`É>É`LÄ>Ä`>~É>~ÉÄæV^>•ÉUæAZiÄÉ>iÉi...iÉ
i•i`i~i>ÄpÉ•iÜi°
UÊ~Äi>liÉ-Ö`"iÄÊ-V...ææ•É>iÉ...æÉÄiVæÄiÉvÖÉÄiVÖÜiÉÉpi>ÄjÉ>ÄÊ`~Éi...iÉ
Ä•^«ÉÄiÖ`i~iÄ°
UÊ`É>É}ÄæÖ~`ÄZii«iÄÉ`iv...>UÊÜiÉÉ...^y...ÉÄV...ææ•ÉÄiÖ`i~i±`ÖÄ^V^>~ÄÊÜiÄ
Ä`~^v^v>~i•pÉÄi`ÖViÉvæÄiÄÉiÄvæÄiÄÉvÖÄÄiÉi`pÉÉ7~liÄÉæ~viÄi~vi½/
æÖiÄæÖÄVi`°É
UÊÖÄV...>ÄiÉ>ÉvÖ•±ÄiÄÜ`ViÉiÄ`QvÖÖÄZpÉÉÄiVÄiÉÜ...^V...É
Ü••É•i>`ÉiæÉ`VÄi>ÄiÉÄ>Ü~}ÄÊ~Éi...iÉ}ÄæÖ~`ÄÉ
">~i~>~ViÉ«Äæ}Ä>°
UÊ«>viÉi...iÉ«>p}ÄæÖ~`É>iÉvÖæÄÄ±væÖ~`
•i`i~i>ÄpÉ>~É">ZiÉ~iViÄÄ>ÄpÉÄi«>ÄÄÉi
«>p}ÄæÖ~`ÄÉ>iÉæ...~É°ÉÄiÄÄpÉ>~iÉÖ`i
*æ~i°
UÊvÖÄL^Ä...Éi...iÉ...^}...ÉÄV...ææ•ÉÄiÖ`i~i±`ÖÄ^V^>~ÄÊÜiÄ
ÄÉiÜ`i~vi`ÉLpÉi...iÉ•ÄiÉ>LÖ`}iÉÉvÄæ`Éf{É`^••æ~ÉiæÉfÖ`ÇÉ`V...æ>ÄÄ...«É`Äæ
Væ~i~ÖiÉiæÉLiÉ«ÄÖ`i~iÉÜ`i...ÉæÖÄÉLÖ`}iÉÉvÄæ`Éf{É`^••æ~ÉiæÉfÖ`ÇÉ`V...æ>ÄÄ...«É`Äæ
Væ~i~ÖiÉiæÉÄi~ÜiÄiÉ`ÉæÖÄÉLÖ`}iÉÉvÄæ`Éf{É`^••æ~ÉiæÉfÖ`ÇÉ`V...æ>ÄÄ...«É`Äæ
V>«^i>É`~vÄ>ÄiÄÖViÖÄÄÉv>æÖÉi>É>ÖÄ
"ÖÄÉ}æ>•É`ÄÉiæÉÄi">~Év^ÄV>•pÉÄiÄ«æ`É`ÉiÉiÉ
Ü...^•iÉ">~i>~}É...^}...±µÖ>•x}pÉÄÄpÉÄ`ÄÄÉvæÄÉv^~Ä...i`Év^vi...ÉæÜiÄ>•
æÖÄÉÄiÖ`i~iÄ°É"ÖÄÉ«•i}iÉ`ÄÉiæÉvæ~i~ÖiÉiæÉ
v~`ÉÜ>pÄÉiæÉÄi`ÖViÉÄ«i~`UÊ~`ÉÄÜÄpÉÄpÉÄ`ÖÄiÖÉiÄÊÜæ~É`Ö`iÄæÖÄÉ°iÄ
>~ÉvÖ~`ÄÉÄi>•Äi`Éi...ÄæÖ}...Äi>ÄÄÉÄ>UÊ`ÄÄÉvÄææÉÜ°
LÖ`}iÉiæÉLÖ`}iÉÉv>~ÉLiÉÖÄi`ÉiæÉ">ZiÉ~iViÄÄ>ÄpÉ
^^`ÄæÜi`i~iÄÊ>ÄÊÜiÉÄi~ÜiÄiÉUÊ`ÉÄiÄiÉvÖÄiÉævÉÄÉ/Ä±ÉÖÄ^VÉæ~æÄÉ
>ÄiÉÄ•^«É-V...ææ•Ä°
UÊÄiÜæÄZÉLpÉ...^}...ÉÄV...ææ•ÉÄiÖ`i~iÄÊÜ>ÄÉ
°`Ü>~Vi`É6^Ä^æ~ÄÉÉÖiÉ^}...É-V...ææ•ÉÄiÄ`Ä
æÖ~i`pÉ-ÉÉÄiÉ-...æÜÉY...^L^iæ~É~
/i>v...iÄÄÉÄÄæV^>i^æ~Éi}^Ä>i`ÜiÉY...^L^iÉ



-~ViÄi•p]
æ...~É6°Éæ•>~É
-Ö`«iÄ`~i~i~iÉævÉ-V...ææ•Ä

UÊÄiÜæÄZÉLpÉ...^}...ÉÄV...ææ•ÉÄiÖ`i~iÄÊÜ>ÄÉ
°`Ü>~Vi`É6^Ä^æ~ÄÉÉÖiÉ^}...É-V...ææ•ÉÄiÄ`Ä
æÖ~i`pÉ-ÉÉÄiÉ-...æÜÉY...^L^iæ~É~
/i>v...iÄÄÉÄÄæV^>i^æ~Éi}^Ä>i`ÜiÉY...^L^iÉ

Ê œ~«Àœv^i]Ê "A
1°-°Ê*œÃi>}i
PAID
*iÀ"~i]Ê œ°Ê{{
>ÃiÊ Ã•^«]Ê 9Ê

IIIE ,7--ÊIIIÊÊ*œÃi>•Ê ÖÃiœ"iAÊUÊ œV>•Ê,iÃ~i~iÊ i•^ÛiÀP



Voter Registration Books Inspection

/...iÊÀi}^ÃiÀÊÛ^••ÊLiÊœ«i~ÊvœÀ
V•iÀZ½ÃÊœvv^ViÊÖ«œ~ÊVœ«•i]Ê
«À^œÀÊiœÊi...iÊLÖ`}i]ÊÛœliÊ>~
LÖÃ~iÃÊ...œÖÀÃÊ>~Êœ~Ê->iÖA
Li]Ûi~Êi...iÊ...œÖÀÃÊœvÊ££Ê>°

Qualifications for Voting

9œÖÊ"ÖÃiÊLiÊ£nÊpi>ÀÃÊœvÊ>}iÊ
-i>i]Ê>~°°°
>ÖÊÀi}^ÃiÀi`ÊÛ^i...Êi...iÊ-Övvœ•Z
•iV]Êœ~Ã]ÊœÀ
LÖÊÛiÊÛœli`Ê~Ê>ÊÃV...œœ•]Ê^L
i...iÊ >ÃiÊ Ã•^«Ê-V...œœ•Ê ^ÃiÀV
pi>ÀÃ]ÊœÀ
VÖÊÛiÊÀi}^ÃiÀi`ÊÛ^i...Êi...iÊÃV...
Óä£Ê°

Absentee Ballots

«•^V>i^œ~ÃÊvœÀÊ>LÃi~i]ÊL>•
i...iÊ^ÃiÀ^ViÊV•iÀZ½ÃÊœvv^Vi°
LiÊÀiVi^ÛiÊLpÊi...iÊ^ÃiÀ^ViÊV
LivœÀiÊi...iÊÛœliÊ^vÊi...iÊL>•œ
Ûœli]ÊœÀÊLpÊi...iÊ`>pÊLivœÀ
LiÊ`i•^ÛiÀi`Ê«iAÃœ~>••pÊiœÊi...

Ê•^ÃiÊœvÊ>••Ê«iAÃœ~ÃÊiœÊÛ.
Li~Ê^ÃiÀi`ÊÛ^••ÊLiÊ>Û>^>L•iÊ
œvv^ViÊœ~Êi...iÊv^ÛiÊ>pÃÊ«À^
`ÖÀ~}ÊLÖÃ~iÃÊ...œÖÀÃ°Ê~Êc
>LÃi~i]ÊÛœliÀ½ÃÊL>•œiÊ"ÖÃi
œvv^ViÊLpÊxÊÇ]ÊÖœÊ°ÊpÊ

+ÖiÃi^œ~Ã]Ê*•i>ÃiÊVœ~iÊViÊi...
Êi£†ÓÓ{†Óä£i°

U Ê " , Ê " Ê 1 / " Ê

*...^•^«Ê œ~iÖœÀÊ-À°]Ê*AiÃ~i~i
Ê ...À^Ãiœ«...iAÊ<>V...Àp]Ê6^ViÊ*AiÃiÖi]ÊÛ
iAÃV>Ê >AÖÃ]ÊÊUÊÊ7^•^AÖÃiÃi«ÖZ]
œ...~Ê6°Ê œ>~]Ê-Ö«iA~i~i]ÊœvÊ-V

This newsletter is published by the Board of Education as a community service to inform the public of school news and business. If you have any questions, please feel free to call 631-224-2000 or fax 631-581-1617.